

PRODUCT LIST OF ERA

Guangzhou ERA Lighting Co., Ltd

www.eralighting.com

MOVING HEAD SERIES

280W 10R Pointe Beam Spot Moving Head

YY-MP280



Colour wheel 13 colors

Static gobo wheel 14 fixed gobos

Rotating go bo wheel 9 rotating gobos

Prisms

The Robin Pointe features two unique prisms - a rotating 8-facet linear prism and an 8-facet circular prism - which can be used for creating wide reaching effects across any set.

8-facet Circular Prism

6-facet Linear Prism

Circular Prism & Static gobos

Circular Prism & Rotating gobos

Linear Prism & Static gobos

Linear Prism & Rotating gobos

Technical Specifications

- Voltage: AC100-240V/ 50-60Hz
- Lamp: OSRAM HRI 280w/ YODN 280w
- Power: 360w
- Prism:one 8-facet prism and one 6 linear prism
- Color wheel: 1 color wheel, 13 colors
- Gobo wheel: 2 gobo wheels, 13 fixed gobos+ white, 9 rotating gobos+ white
- Prism: 2 prisms, 8-facet circular prism and 6-facet linear prism
- Channel: 16/24 channel
- Beam angle: 0-20°
- 540° Pan and 270° Tilt movement
- 0-100% mechanical dimming, support mechanical strobe and adjustable speed strobe effect, support strobe macro function
- Scan position memory, auto reposition after unexpected movement
- Size: 385x365x589mm(LxWxH)
- Net weight: 19KG

260W Beam Spot Moving Head

YY-M260

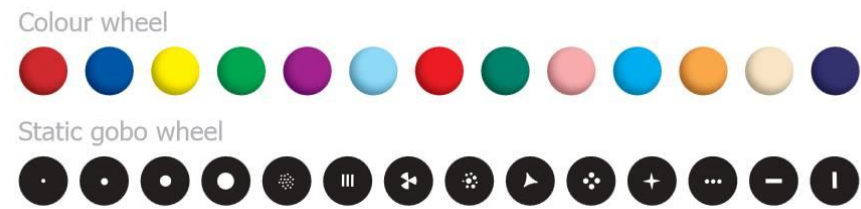


Technical Specifications

- Light source: OSRAM 240W Lamp
- Color temperature: 8000K
- Style: Beam spot moving head light
- Lifespan: Average 2000H
- Color wheel: 17 colors+ blank
- Gobo wheel: 17 fixed gobos + 9 rotation gobos
- Prism: 3faces prism
- Lens: High precision optical lens
- Wash effect: adjustable wash effects angle
- Focus: linear adjustment
- Dimmer: 0~100% linear adjustment
- Pan/tilt: X axis 540 degree, Y axis 250 degree, automatically accurate positioning
- Beam angle: parallel beam angle 3.8degree~4.5degree
- Strobe: double lens strobe (0.5~9 times/second)
- Control mode: Standard DMX512, Automatic and Master/ slave mode
- DMX channels: 17/25CH
- Other function: Controller can open the lamp and reset, including delaying function
- Dimension: 523*337*570mm
- Weight: 18.5kg

230W Beam Moving Head

YY-M230



Technical Parameter:

Lamp: YODN MSD 230W 7R / OSRAM Sirius 230W

Color temperature: 8,500K

Average Life: 2,000Hrs

Input Voltage: AC90-240V 50/60HZ

Power Consumption: 250W

Channel: 16/20CH

YL (YiLong) 3in1 optical group combination

Dimming: 0-100% linear adjustment

Focus: Electronic

Prism: Rotating 8-facet prism

Frost filter

Beam angle:0-3.8 degree

Gobos: 1 gobos wheel with 17 fixed gobos+ open

Colors: 1 color wheel with 14 fixed colors+ open

Operation temp:-20~40℃

Product Size: 330*390*490mm

Carton Size: 420*480*580mm

Dual case:830*460*700mm

N.W.:17.00KGs

G W.:19.5KGs

200W Beam Moving Head Light

YY-M200



Technical Parameter:

200W beam moving head light is a 189W PHILIPS lamp moving head with an unprecedented brightness usually achievable only with far greater wattages. Weighting just 17kg, beam moving head can produce a perfectly parallel, laser-like beam. It offers 14 different colors and 17 gobos, allowing you to change the shape of the beam and create an array of spectacular mid-air effects. With its light weight and modest footprint, 200W beam light is small enough to be fitted anywhere – on trusses at live and TV events, on stage, in showrooms or conference rooms.

- 189W discharge PHILIPS Lamp
- Rapid and extensive pan and tilt movements
- Accurate positioning
- Beam angle: 3.8°
- Color Wheel: 14colors + white
- Gobo Wheel: 17gobos + spot
- 8-facet rotating prism



132w beam moving heads 2R Lighting

YY-M132



Technical Parameter:

- Input voltage: AC90-240V 50-60Hz
- Lamp: YODN MSD 132W
- Control mode: DMX 512, master and slave, sound and auto run
- Channel: 10/11/13 channels
- Power consumption: 230W
- Size: 390x 260x 445mm (L×W×H)
- Net weight: 14KGs

Features

- 16 bit smooth and precise resolution for PAN/TILT movement
- 540° Pan and 270° Tilt movement
- Scan position memory, auto reposition after unexpected movement
- Adjustable beam angle from 0 to 3.8°
- Interchangeable color wheel with 13 fixed colors
- Interchangeable gobo wheel with 14 fixed gobos
- 8-facet rotating prism
- Mechanical shutter and adjustable speed strobe effect
- Frost filter, electronic focus, high speed shaking effect

LED SPOT MOVING HEAD LIGHT SERIES

10W Led Pocket Spot Moving Head

YY-LP10



Technical Parameter:

High output mini Moving Head with a bright white 10W CREE LED source

7 Colors + white, with half color

7 fixed GOBOs + spot, with rainbow effect

Separate color & GOBO wheels

2 DMX channel modes: 8 & 11 Channel modes

540° pan / 270° tilt (16 bit)

Strobe: 0-10 times/sec

Dimming: 0% - 100%

Feature: Built-in variety of lighting effects, can run separately from the console

Optical system: a combination of high-precision quartz lens, so to minimize the loss of light

Protection: All intelligent temperature thermal protection and anti-jamming electronic circuit

Omega bracket included

Linkable: DMX via 3-pin XLR cable

Voltage: AC220V/50Hz

Dimensions (LxWxH): 25*14*15cm

Weight: 2.5 kgs.

120W Led Spot Moving Head Light

YY-L120



Technical Parameter:

Input voltage: AC90-240V, 50-60Hz

Power consumption: 240W

-Light source: Luminous high power 120W white LED light bead

-Color wheel: 1 color wheel with 7 dichroic colors, which is opening with variable rainbow effect and adjustable speed

-1 rotating gobo: 7 interchangeable gobos + open with adjustable speed, flowing water effect, jitter effect, positive and negative rotation function

-1 fixed gobo: 9 interchangeable gobos + open

-Control mode: DMX512, master and slave, auto run and sound

-Channel: 16 channels

Prism: 1 rotatable 3-facet prism with adjustable speed and variable direction.

Size: 410x370x480mm(L×W×H)

G.W: 16kg

150W Led Spot Moving Head Light

YY-L150



Technical Parameter:

Input voltage: AC90-240V, 50-60Hz

Power consumption: 240W

-Light source: Luminous high power 150W white LED light bead

-Color wheel: 1 color wheel with 7 dichroic colors, which is opening with variable rainbow effect and adjustable speed

-1 rotating gobo: 7 interchangeable gobos + open with adjustable speed, flowing water effect, jitter effect, positive and negative rotation function

-1 fixed gobo: 9 interchangeable gobos + open

-Control mode: DMX512, master and slave, auto run and sound

-Channel: 16 channels

Prism: 1 rotatable 3-facet prism with adjustable speed and variable direction.

Size: 410x370x480mm(L×W×H)

G.W: 16kg

60w led spot moving head light YY-L60



Technical Parameter:

- Input voltage: AC100-240V,50/60Hz
- Light source: 1 pc Lunimus 60W White LED
- Power consumption: 120W
- Control mode: DMX512, master and slave, auto run and sound
- 1 color wheel: 6 colors+ open, half color effect and bi-directional rainbow effect at variable speed
- 1 rotating gobo wheel: 7 rotating gobos+ open, bi-directional rotating at variable speed
- Prism: 3-facet prism, bi-directionally rotating, at variable speed
- Strobe: 0~20Hz, speed adjustable
- Size: 440x415x350mm(L×W×H)
- Net Weight: 9KG

Color & Gobo



LED BEAM MOVING HEAD LIGHT SERIES

8eye Led Linear Beam YY-L8



Technical Parameter:

Input voltage: 110V~230V,50Hz/60Hz

Power: 100W

Lamp: 8pcs 10W White color or RGBW color

Optical lens: 8°

Control modes: DMX, Auto, Sound-active, Program

DMX channel: 10CH/14CH/38CH

XLR connectors: 3pin or 5pin

Features:

1. 5 built-in programs
2. Thermal management system ensures long life of the LED lamps
3. Electronic protection against short circuit
4. Blue LCD display of 16*2digits
5. Power failure memory
6. Dimmer 0%-100%
7. Strobe 1-30 fps
8. Power in/out for daisy-chain
9. Quarter-turn fastener mounting points
10. Set slave ID

Packing

N.W: 8.5kg

Size: 113cm*17cm*22.55cm

Four Head Beam Moving Head Light

YY-L4



Technical Parameter:

Voltage: AC100–240V, 50–60 Hz

Power: 80W

Light source: 4 pcs 10W high luminance white/RGBW LEDs

Strobe: 18 t/s strobe effect and pulse strobe effect

Dimming: 0-100% linear dimming

Control System: DMX512, master and slave, auto run, sound.

Control Channel: 9CH/ 28CH

Movement: Pan: 540° ; Tilt: 270° with 16 bit precision scanning.

Smooth and precise positioning, adjustable scanning speed and auto reposition after unexpected movement.

Size: 810X130X260mm(L×W×H)

Net Weight: 7.2KGs

LED WASH MOVING HEAD LIGHTING SERIES

25x15w eyes led matrix moving head light

YY-L2530



Technical Parameter:

- Light Source: 25pcs 15W OSRAM LED
- DMX Channel: 18/28/118CHs
- Beam angle: 8degree
- Individual control of each LED source in expanded FULL COLOR mode(RGBW)
- Offer the option to display numbers, letters, graphic effects or images.
- 3 phrase motor, more quiet

Power supply: AC110V-250V 50-60Hz

Power consumption: 385W

Pan/Tilt:540° /270°

Heat protection: one 85° C over heat protection thermostat

Working temperature: -10° C-45° C maximum

Cooling: low noise fan

Operation menu: LCD screen display

Protection Rating:IP20

Packing size: 450*360*470mm(1 pc/carton)

N.W: 12kg G.W: 14kg

19x12W Led Zoom Moving Head Lighting

YY-L1912Z



Technical Parameter:

Voltage: AC100-240V, 50/60HZ

Light Source: 19PCS x 12W full-color high-power LED(RGBW 4 in 1)

Power: 280W

Channel Mode: 15CH

Dimmer :0-100%, four dimming curve

Strobe :0-25HZ, plus random strobe function

Drive mode: constant current drive

Beam angle: 10 ° -60 °

Pan: 540 ° Tilt: 240 ° ,

16-bit resolution, auto-correction feature

Display: Chinese and English LCD

IP Rating: IP20

Housing: Flame retardant engineering plastics

19x12W bee eye Led Moving Head

YY-L1912



Technical Parameter:

Voltage: AC100-240V 50/60Hz

LAMP SOURCE: 19 × 12W RGBW LEDs

Color temperature: 2500 - 8000 K

Three operating modes: beam, FX (Kaleido effects)

Front Lens Bi-directional Rotation

Digital Wash-Beam Framing effect

Beam edge softening control (in Wash mode)

0-100% linear electronic dimmer

Adjustable speed stop/strobe effect, with instantaneous blackout

Dedicated channel for color temperature setting

RGBW auto-tuning

DMX512: 3/5-pin XLR IN-OUT sockets

Power connect: Powercon in&out

Movement by means of two stepper motors, controlled by microprocessor

Automatic repositioning of PAN and TILT after accidental movement not controlled by control unit.

Display: LCD display

Channel: 18/52CH

7*10W Led Moving Head

YY-L710



Technical Parameter:

- Input voltage: AC110-240V, 50-60Hz
- Power consumption: 75W
- Light source: 7 pcs 10w RGBW 4 in 1 LEDs
- Control mode: DMX512, master and slave, auto run and sound
- Channel: 8/13 channels
- Size: 250x220x330mm(L×W×H)
- Net weight: 3.2KGs

Features

- Variable electronic strobe
- Variable electronic dimming (0-100%)
- Vector speed channel for pan/tilt, RGBW color mixing and color macros
- Built-in movement macros via master/slave or DMX - User-selectable basic or advanced operating modes
- User-selectable pan/tilt ranges
- Compact and light weight
- LED display menu with invert

12*10W Led Moving Head

YY-L1210



Technical Parameter:

Input voltage: AC90V-250V, 50-60Hz

Power consumption: 160W

Light source: 12 pcs 10W Cree RGBW 4 in 1 LEDs

Lamp life: 6-10 ten thousand hours

Beam angle: 20°

Light spot angle: 9°

Channel: 15 channels

Control mode: DMX512, master and slave, auto run and sound

Size: 315 × 215 × 360mm(L × W × H)

Net Weight: 5.2KGs

Features

-540° Pan and 270° Tilt movement

-0-100% electronic dimming

-variable electronic strobe

-Built-in process a variety of lighting effects can be synchronized from the control station

-LCD screen display

-Compact and lightweight

36*10W Led Moving Head

YY-L3610



Technical Parameter:

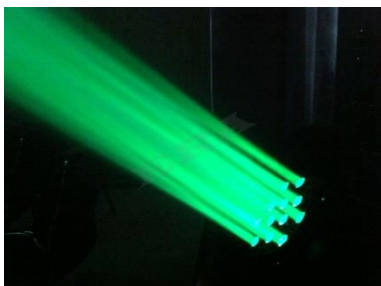
- Input voltage: 90-240V, 50-60Hz
- Light source: 36 pcs 10W RGBW 4 in 1 Tianxin LEDs
- Power consumption: 400W
- Beam Angle: 10° ~50°
- Channel: 16 channels
- Control mode: DMX 512, master and slave, sound and auto run
- Dimming: 0-100% linear dimming
- Strobe: 1-25 times/sec, speed adjustable
- Size: 395x320x460mm(L×W×H)
- Net weight: 5.5KGs

Features

- With the ZOOM function -100000 hours LED life, Energy
- Saving and environment-protective
- Dimmer channel can control 4 colors at the same time
- Well-proportioned RGBA color mixture system and rainbow effect, adjust the color temperature to reach much wonderful by the white LEDs
- Beautiful blue and white liquid crystal display

36*3W Led Moving Head

YY-L363



Technical Parameter:

- Input voltage: 100-240V, 50-60Hz
- Light source: 36 pcs 3W RGBW 4 in 1 Cree LEDs(R6, G12, B12, W6)
- Power consumption: 160W
- Channel: 9/12/16 channels
- Control mode: DMX 512, master and slave, sound and auto run

Dimmer: 0-100% linear dimming

Strobe: 1-20 times/sec, speed adjustable

Size: 340x260x350mm(L×W×H)

Net weight: 5.5KGs

Features

8/16 bit smooth and precise resolution for PAN/TILT movement

540° Pan and 270° Tilt movement

remarkably small, super light and easy-to-use

a kind of LED moving head wash light with an amazingly bright beam

rapid movement and calibrated colors with a low price tag that allows for revolutionary set, stage and decorative lighting design.

-LCD digital display

108*3W Led Moving Head

YY-L1083



Technical Parameter:

- Input voltage: AC100-240V, 50/60Hz
- Light source: 108 pcs 3W RGBW LEDs
(R:30, G:30, B:30, W:18)
- Lifetime: 100,000 hours
- Channel: 11/17 channels
- Control mode: DMX512, master and slave, auto run and sound
- Light spot angle: 15° , can provide with the lenses in different angle
- Size: 460×335×385mm(L×W×H)
- Net Weight: 9KGs

Features

- 540° Pan and 270° Tilt movement
- adopting low consumption, energy saving and environmental LEDs as light source.
- High speed electronic adjustment strobe can reach 1-25 times/second or adjoint strobe
- the main dimmer channel can control the tone and shutting of 4 main colors simultaneously
- average RGBW mixing color system and rainbow effect
- beautiful blue and white LCD screen

LED PAR LIGHT SERIES

18*10W Outdoor Led Par Can Waterproof

YY-P18101



Technical Parameter:

- Lamp: 18 pcs 10w RGBW 4 in 1 LEDs
- IP Rate: IP65
- Beam Angle: 15° / 25° / 45° (optional)
- Control Mode: DMX512, master and slave, sound and auto run
- DMX channel: 8 CHs

18*10W Indoor Led par

YY-P18102



Technical Parameter:

- LED lamp: 18 pcs 10w RGBW 4 in 1 LEDs
- IP Rate: IP20
- Beam Angle: 15° / 25° / 45° (optional)
- Control Mode: DMX512, master and slave, sound and auto run
- Channel: 8 channels

54x3W Indoor LED Par Can

YY-P5432



Technical Parameter:

- Light source: 54 pcs 3w RGBW LEDs(R14, G14, B14, W12)
- Beam angle: 15° / 25° (standard) / 45° (optional)
- DMX channel: 8 CHs
- Used Indoor
- Lamp life: 6-10 million hours

54*3w outdoor Waterproof Led Par

YY-P5431



Technical Parameter:

- LED: 54pcs 3W RGBW
- Led Quantity: R 14, G 14, B 14, W 12
- Beam angle: 15° / 25° / 45° (optional)
- DMX channel: 8 channels
- IP65
- Lamp life: 6-10 million hours
- Static colors and RGB color mixing with or without DMX controller

7x15W Outdoor Led Par Can

YY-P715



Technical Parameter:

- Lamp: 7 pcs 15W RGBWA 5 in 1 LEDs
- IP Rate: IP65
- Beam Angle: 25° (Standard)
- DMX Channel: 5/9 CHs
- LEDs reaches 100000 hours
- Power consumption: 120W

12x10W Outdoor Led Par Can

YY-P1210



Technical Parameter:

- Lamp: 12 pcs 10W RGBW 4in1 LEDs
- Working lifetime: 100 thousand hours
- Beam angle: 25° /45°
- Channel: 8 channels
- Power consumption: 120W
- Static colors and RGB color mixing

36x3w Indoor Led Par Can

YY-P3632



Technical Parameter:

- Lamp: 36 pcs 3w RGB 3 in 1 LEDs
- Power consumption: 150W
- IP rate: IP20
- Beam angle: 15° -20° (optional)
- Control mode: DMX512, master and slave, sound and auto run
- DMX channel: 8CHs

36x3W Outdoor Waterproof Led Par Can

YY-P3631



Technical Parameter:

- Lamp: 36 pcs 3w RGB 3 in 1 LEDs
- Power consumption: 150W
- IP rate: IP65
- Beam angle: 15° -20° (optional)
- Control mode: DMX512, master and slave, sound and auto run
- DMX channel: 6CHs

9x3W Wireless Led Par Flat Can

YY-P93



Technical Parameter:

- Light source: 9 pcs 3W high brightness RGB 3 in 1 LEDs
- LED angle: $30(\pm 5)^{\circ}$
- IP Rate: IP65
- Control mode: DMX512, master and slave, auto run, sound and wireless DMX
- Channel: 3/6 channels
- 16.7 million kinds of color change

EFFECT LIGHTS SERIES

2R 132w Sniper Beam Scanner Laser

YY-E132



Technical Parameter:

Voltage: AC100-240V 50/60Hz

Power: 220W

Lamp: Yodn MSD 132 R2

Average lifespan: 6000Hours

Color temperature: 8000K

3 DMX control mode: 14/16/18 Channels

Gobo plate: 17gobos+open

Color plate: 14 colors+open

One rotating 3-facet prism

0-100% machanical dimmer

strobe speed at 0.5-14/sec

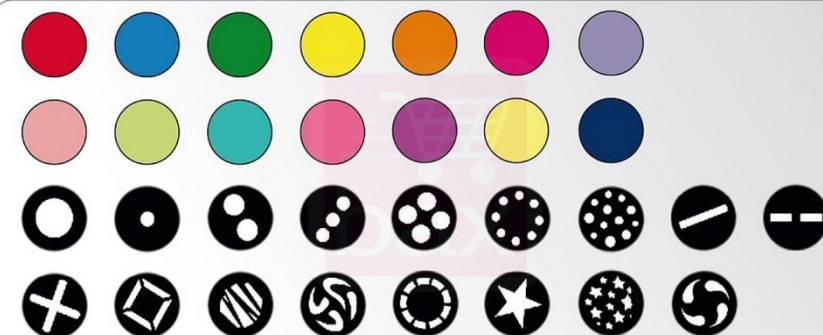
Beam Angle 3°

Manually zoom

Built-in laser effect

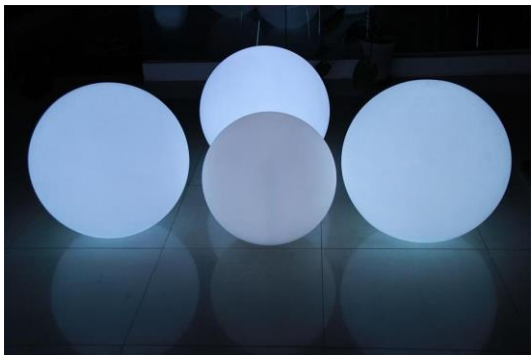
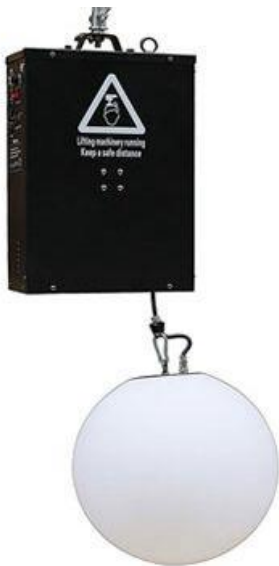
XYZ high speed reflecting mirror system

N.W: 9KGS



DMX Led Lifting Ball

YY-ELB



Technical Parameter:

Voltage: AC90-240V/ 50-60Hz

Total power: 45W

Light source: 252pcs led beads(R: 84,G: 84,B: 84)

Control channel: 8 channels

Various strobe effect

Red, green, blue can be separately controlled, 256 grade of brightness control, without flicker.

Chassis: 7.5KG

Gross weight: 8.5KG

Lifting height: 1.5 meters standard, can be customized according to customer's request

Lifting hanging weight: 1KG-2KG

Lifting case size: 270x140x420mm

Carton packing size: 475x355x220mm

Hanging LED lamp has these following options:

- Diameter: 35cm
- Packing: 385x385x460mm
- Net weight: 1.75KG
- Gross weight: 3.5KG



200W Roller Scanner

YY-E200



Technical Parameter:

Voltage :110V/240V AC, 50/60Hz

Power Consumption:230W

Fuse: 3A/240V

Lamp: Philips 200w 5R(DMX on/off)

Body Size: 26*31*49cm

Net Weight: 5.6Kg

Lumen output:20000LM/10meter

Color Temperature:8000K

Prism:8 Prism rotation

Gobo: Gobo wheel with 14 gobos

Colors: Color wheel with 13 colors, single rotation rainbow effect

DMX Channel:8CH

Control: Master-slave mode

DMX Mode: Auto mode

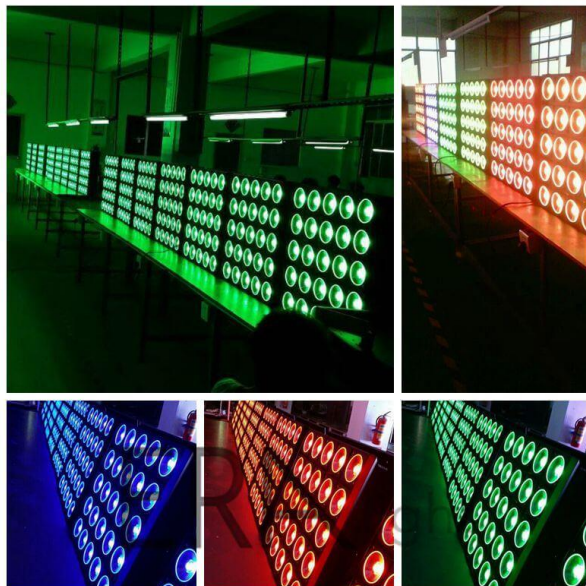
Focus :Double automatic focusing

Dimmer:Independent dimmer channel, 0-100% linear dimmer

Strobe:Independent strobe channel, 1-13times/s, speed adjustable

LAMP DMX ON/OFF:LAMP DMX ON/OFF, ignited by inverter,protect and lengthen the lifetime of the bulb

25x30w RGB 3in1 led matrix light YY-E2530



Feature

- 25 * 30w 3-in-1 RGB Leds
- Each color of Led is independent control
- Beam angle: 24° , 38° , 60° optional
- Channel: 8CH/80CH
- Led type, energy saving, long time life and cost-saving

Technical Specifications

- Voltage: AC100-240V/50/60Hz
- Power: 800W
- Light source: 25 pcs 30W 3 in 1 LEDs
- Lifetime: 100,000 hours
- Beam angle: 24° , 38° , 60° optional
- Color range: 16.7 million colors (0-100% saturation adjustable)
- Channel: 8CH/80CH
- Protection: IP20
- Control mode: DMX, master and slave, auto run, sound
- Size: 580×580×125mm (L×W×H)
- Net weight: 15.5KG

Thanks your viewing!

Any questions, please contact us!

www.eralighting.com

info@eralighting.com

sales@eralighting.com